

International Organization for Migration Addendum

Responding to Global Displacement Emergencies



GLOBAL CLASSROOMS DC
SPRING 2026 MODEL UN CONFERENCE

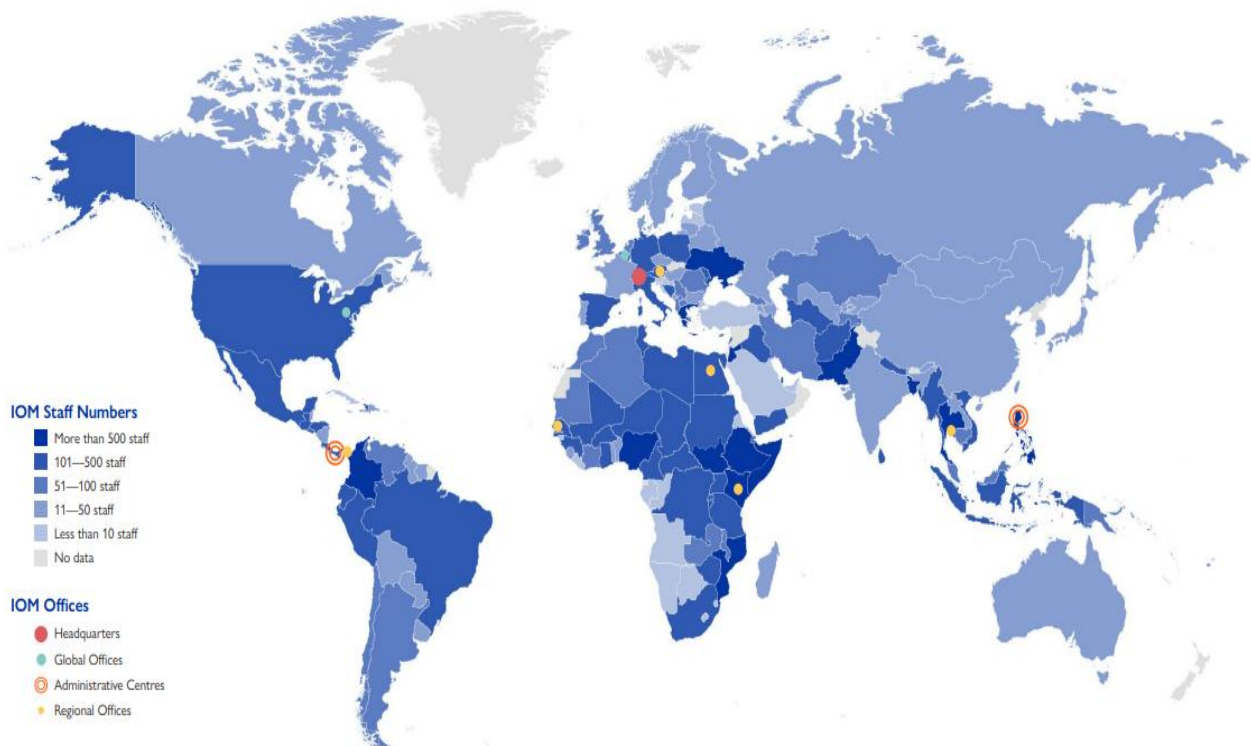
Proprietary Rights to UNA – NCA Global Classrooms® DC

IOM Addendum to the UNHCR Brief

Background on IOM

As the UN Migration Agency, the International Organization for Migration (IOM) plays a central role in responding to global displacement emergencies driven by conflict, disasters, climate shocks, and mixed migration dynamics. IOM operates in 171 countries through more than 550 field offices across six regions.

Below is a breakdown of IOM's global footprint.



IOM's comparative advantage lies in its ability to operate across the full displacement cycle, from emergency response and stabilization to recovery and long-term solutions, while coordinating closely with UNHCR, governments, and other humanitarian partners. As a triple mandated agency – IOM works across the humanitarian–development–peace nexus (HDPN).

IOM responds to displacement emergencies through:

- Rapid operational deployment in crisis and fragile settings;
- Direct assistance to displaced populations, including internally displaced persons (IDPs), refugees, migrants, and host communities;

- Provision of logistics, shelter, camp coordination and management (CCCM), and emergency health support;
- [Data collection](#) and displacement tracking to inform humanitarian decision-making; and
- Support to government-led responses, including border management and reception systems.

IOM's response to displacement is comprehensive, integrating humanitarian assistance with peace and development-oriented programming aimed at enabling sustainable, long-term solutions. IOM is dedicated to partnering with local actors to ensure faster access to assistance during crisis, strengthening local capacity and supporting sustainable responses rooted in community knowledge.

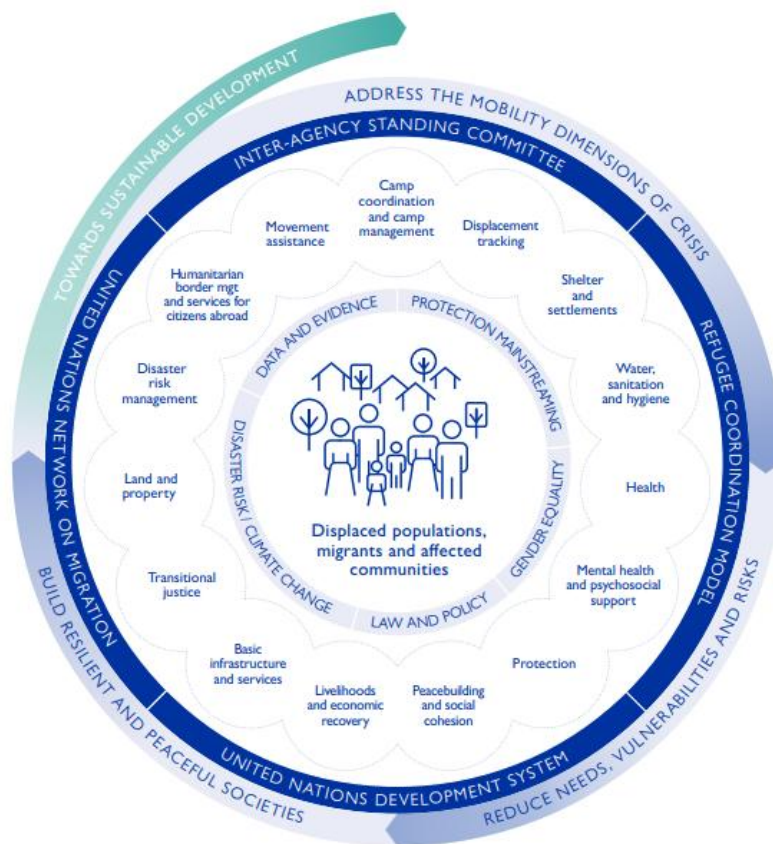
[IOM's Approach to Addressing Crisis](#)

Humanitarian assistance and protection are central to IOM's crisis response, but they are not enough to deliver solutions in complex crises. As such, IOM also engages in transition and development-oriented activities to address the drivers and longer-term impacts of crisis and to offer solutions to displacement. In parallel, the IOM focuses on preparedness and disaster risk reduction in at-risk and fragile areas. [The Migration Crisis Operational Framework \(MCOF\)](#) is IOM's framework for comprehensive response to address the mobility dimensions of crises, grounded in the needs and aspirations of affected people.

It provides operational guidance to implement the three objectives of the IOM's Strategic Plan 2024-2028 in at risk, fragile, and crisis settings.

- 1) [Saving Lives and Protecting People on the Move;](#)
- 2) [Driving Solutions to Displacement;](#) and
- 3) [Facilitating Regular Migration Pathways.](#)

The MCOF underscores IOM's people-centered approach and its commitment to supporting states in fulfilling their responsibilities to protect and assist crisis-affected populations within their territories. It also highlights the importance of collaboration across the HDPN to ensure coordinated, sustainable, and impactful responses. Below is a visual representation of the MCOF.



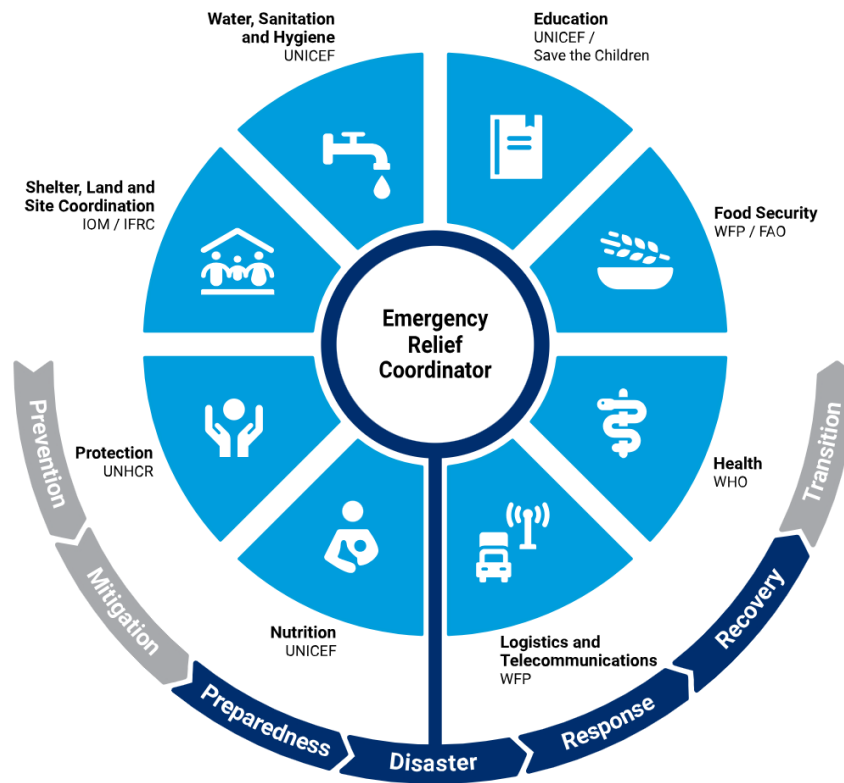
IOM's Key Approaches to Displacement

IOM's approach to displacement brings together data-driven analysis, community-centered recovery, and strong government leadership within a broader, multi-stakeholder framework. At the heart of this approach is the [Displacement Tracking Matrix \(DTM\)](#), a core tool that generates timely, detailed insights into the mobility patterns, vulnerabilities, and needs of displaced populations. By grounding decision-making in reliable evidence, the DTM supports more precise humanitarian responses, strengthens coordination among actors, and enables more effective planning across all phases of displacement.

Building on this foundation, IOM works to advance durable solutions that prioritize dignity and long-term stability. Central to this effort is the belief that displaced communities should play a leading role in shaping their own recovery. Whether individuals ultimately return to their places of origin, integrate locally, or settle elsewhere, IOM supports processes that enhance self-reliance while reinforcing government capacity. This includes promoting access to livelihoods and essential services, as well as fostering social cohesion and resilience within affected communities.

The Cluster System in Humanitarian Operations

In order for humanitarian partners to better coordinate, the cluster approach was adopted by the [Inter-Agency Standing Committee](#) in 2005. The approach is intended to strengthen preparedness and technical capacity to respond to humanitarian emergencies by improving leadership for a reliable and effective humanitarian response. The Inter-Agency Standing Committee has designated eight global clusters which have been simplified as of March 2026 to better fit multidimensional operational contexts. IOM typically leads or co-leads the Shelter, Land and Site Coordination cluster.



The Humanitarian Reset

The **Humanitarian Reset** refers to a growing call within the international community to fundamentally reform how humanitarian aid is delivered in response to today's increasingly complex global crises. Driven by challenges such as the COVID-19 pandemic, prolonged conflicts, and climate disasters, the current system (largely coordinated by bodies like the United Nations) is seen as overstretched and inefficient. The reset emphasizes shifting more power and funding to local actors, improving efficiency,

and ensuring aid better meets the needs of affected populations, making humanitarian response more sustainable, inclusive, and effective.

In March 2025, the Secretary-General launched the UN80 Initiative to transform how the United Nations works by identifying efficiencies, reviewing how mandates are implemented, and examining potential structural changes and program realignment across the UN system. These efforts align closely with broader discussions on the Humanitarian Reset, which seek to adapt humanitarian action to rising global displacement, increasing operational complexity, and constrained resources. Together, these initiatives underscore a shared focus on more effective, coordinated, and impact-driven responses to displacement emergencies.

Under UN80, IOM's approach is anchored in the New Humanitarian Compact, with a strong emphasis on practical, systemwide efficiencies delivered through close collaboration with UNHCR, WFP, UNICEF, and OCHA. IOM is actively contributing to efforts to reduce fragmentation by advancing interoperable beneficiary data systems, more integrated supply chains, and shared back-office services. In parallel, IOM is deeply engaged in the Humanitarian Reset, participating in key interagency platforms driving reform, including the simplification of the humanitarian coordination architecture from 11 clusters and four Areas of Responsibility to eight integrated clusters (figure above). Within this streamlined system, IOM, together with IFRC, now serves as the global co-lead of the Shelter, Land and Site Coordination (SLSC) Cluster, reflecting its operational leadership and comparative advantage. IOM stands ready to bring its field-driven expertise and proven efficiency track record to UN80, supporting a UN system that is leaner, more coherent, and better equipped to deliver results for crisis-affected populations.

IOM–UNHCR Collaboration in Displacement Emergencies

IOM and UNHCR work closely together in displacement emergencies, leveraging complementary mandates and operational strengths. Collaboration includes:

- Joint planning and coordination in refugee and IDP responses;
- Division of labor across protection, shelter, CCCM, data, and logistics;
- Information sharing and joint analysis to inform response strategies; and
- Support to host governments in managing large-scale displacement.

This partnership is particularly important in complex emergencies where displacement dynamics span borders, legal statuses, and population groups. Continued coordination between IOM and UNHCR remains essential to delivering effective, principled, and timely assistance.